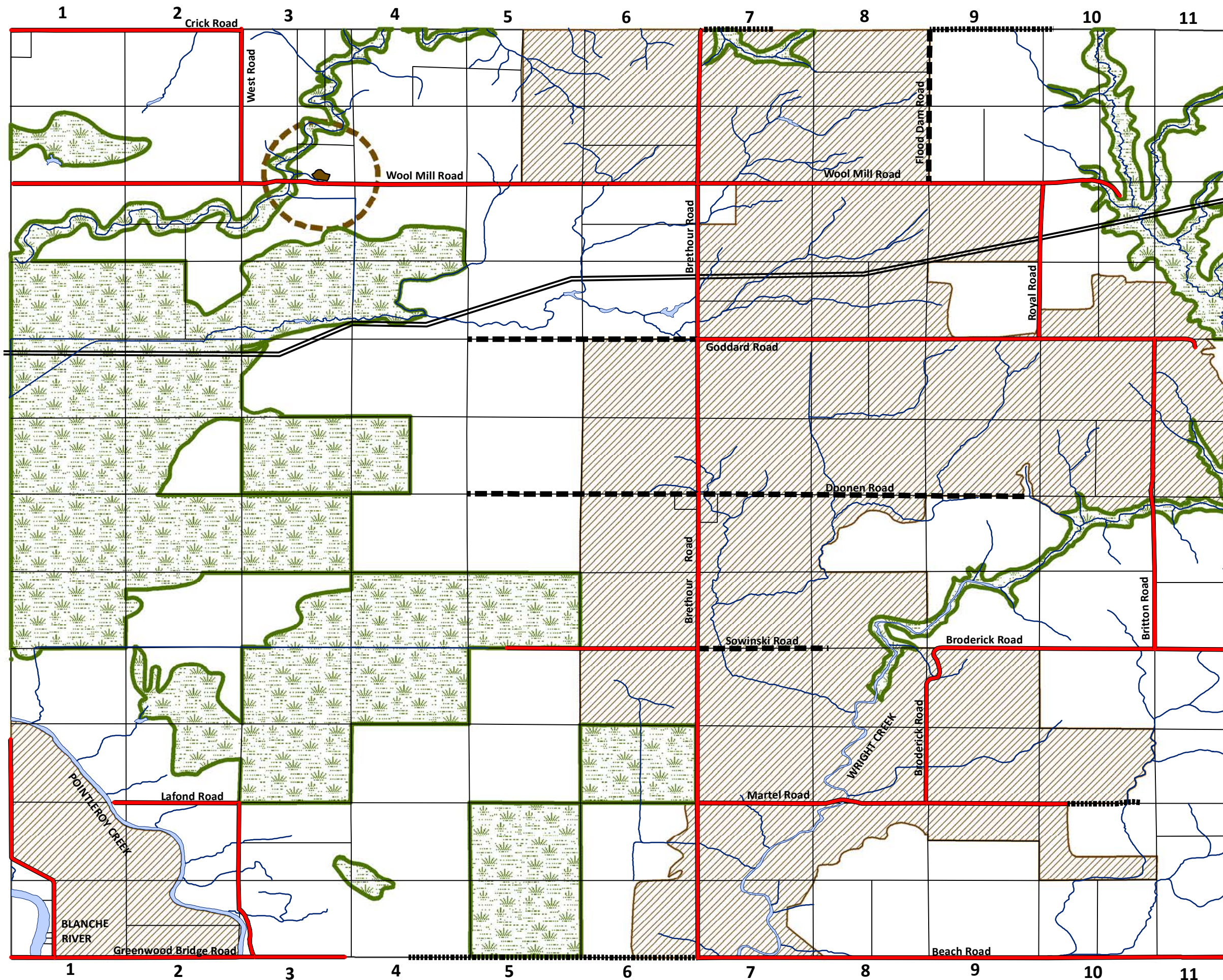


**BRETHOUR TOWNSHIP
OFFICIAL PLAN
SCHEDULE 'A'
LAND USE AND ROADS PLAN**

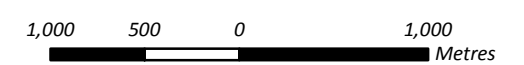


- DESIGNATIONS**
- Agricultural Area
 - Rural Area
 - Environmental Area
 - Household Waste Disposal Site
 - Household Waste Disposal Assessment Area
 - Year Round Maintained Municipal Road
 - Seasonally Maintained Municipal Road
 - Unmaintained Road
 - Water Course, Permanent
 - Other Drainage Course
 - Pipeline
 - Lot

ADOPTED:
December 8, 2009

MMAH NOTICE OF DECISION:
February 15, 2011

IN EFFECT:
March 8, 2011



Base Mapping Source:
Ministry of Natural Resources - Land Information Ontario - Warehouse.

THIS MAP IS FOR GENERAL
ILLUSTRATION PURPOSES ONLY.
FOR BOUNDARY INTERPRETATIONS
PLEASE CONTACT THE TOWNSHIP OF BRETHOUR.

